



OFFERING SUMMARY

Available SF:	1,750 - 10,500 SF
Lease Rate:	\$20.00 SF/yr
CAM Rate:	\$1.25/SF
Lease Type:	Modified Gross
Building Size:	10,500
Market:	Oklahoma City
Submarket:	Mustang, Yukon

PROPERTY OVERVIEW

Now pre-leasing office space in the Westgate Park office and retail development. Phase I includes one 10,500SF office building and one 10,500SF retail building. Located just south of the flagship, Class-A Westgate One office building and its over 900 daily employees, this property will have a waterfront view and immediate access to beautiful walking trails and seating surrounding the pond. This is a perfect place for business headquarters and services for the existing employees in Westgate One or the myriad of residential consumers in the area.

Multi-Family 3-story development coming in 2022! It will consist of a 390 units of 1, 2, & 3 bedroom apartment homes that will be located on approximately 20 acres within the Westgate Park Development.

www.WestgateParkOKC.com

LOCATION OVERVIEW

Located in developing Westgate Park on the northeast corner of W Reno Ave and Sara Rd. in the fastest growing county in the state! Conveniently located to both Kilpatrick Turnpike and I-40 and just minutes from downtown. Recent expansion of the turnpike provides a direct route to Will Rogers World Airport.

PROPERTY HIGHLIGHTS

- New Modern Construction
- Ample Parking
- Proximity to Retail
- Planned Development

PAUL SWALES

Equity Commercial Realty II, LLC.
paul@fleskeholding.com

(405) 701- 3505 x218 office
(405) 420- 6244 cell
(405) 310- 1987 fax

JOSH WHITE, CCIM

Equity Commercial Realty II, LLC.
josh@fleskeholding.com

(405) 701- 3505 x221 office
(405) 417- 6761 cell
(405) 310- 1987 fax

WESTGATE PARK - OFFICE DEVELOPMENT

AN OFFICE LEASE OPPORTUNITY

10433 W RENO AVE, OKLAHOMA CITY, OK 73127



W RENO AVE

PAUL SWALES

Equity Commercial Realty II, LLC.
paul@fleskeholding.com

(405) 701- 3505 x218 office
(405) 420- 6244 cell
(405) 310- 1987 fax

JOSH WHITE, CCIM

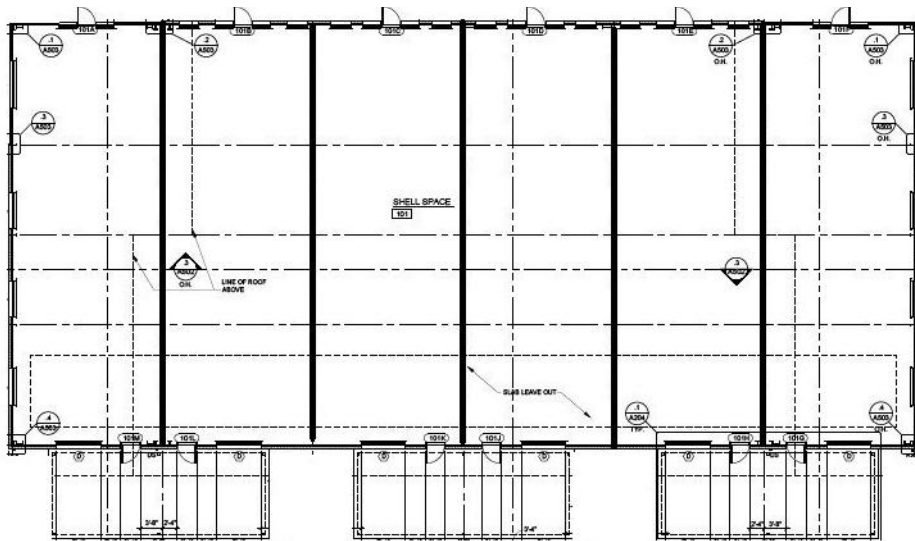
Equity Commercial Realty II, LLC.
josh@fleskeholding.com

(405) 701- 3505 x221 office
(405) 417- 6761 cell
(405) 310- 1987 fax

WESTGATE PARK - OFFICE DEVELOPMENT

AN OFFICE LEASE OPPORTUNITY

10433 W RENO AVE, OKLAHOMA CITY, OK 73127



PAUL SWALES

Equity Commercial Realty II, LLC.
paul@fleskeholding.com

(405) 701- 3505 x218 office
(405) 420- 6244 cell
(405) 310- 1987 fax

JOSH WHITE, CCIM

Equity Commercial Realty II, LLC.
josh@fleskeholding.com

(405) 701- 3505 x221 office
(405) 417- 6761 cell
(405) 310- 1987 fax



WESTGATE PARK - OFFICE DEVELOPMENT

AN OFFICE LEASE OPPORTUNITY

10433 W RENO AVE, OKLAHOMA CITY, OK 73127



PAUL SWALES

Equity Commercial Realty II, LLC.
paul@fleskeholding.com

(405) 701- 3505 x218 office
(405) 420- 6244 cell
(405) 310- 1987 fax

JOSH WHITE, CCIM

Equity Commercial Realty II, LLC.
josh@fleskeholding.com

(405) 701- 3505 x221 office
(405) 417- 6761 cell
(405) 310- 1987 fax

WESTGATE PARK - OFFICE DEVELOPMENT

AN OFFICE LEASE OPPORTUNITY

10433 W RENO AVE, OKLAHOMA CITY, OK 73127



Demographics - 2020 Projections	1 Mile	3 Miles	5 Miles
POPULATION			
Total Population	4,847	53,212	112,202
Median Age	34.6	36	36.9
BUSINESSES & EMPLOYMENT			
Businesses	116	1,126	3,345
Employees	3,751	18,134	112,202
HOUSEHOLDS & INCOME			
Total Households	1,670	19,868	42,938
# of Persons per HH	2.9	2.67	2.6
Average HH Income	\$79,588	\$83,894	\$78,825
TRAFFIC COUNT	+10,000 on Reno Avenue		

*Demographic data derived from STDB estimates and projected rates



PAUL SWALES

Equity Commercial Realty II, LLC.
paul@fleskeholding.com

(405) 701- 3505 x218 office
(405) 420- 6244 cell
(405) 310- 1987 fax

JOSH WHITE, CCIM

Equity Commercial Realty II, LLC.
josh@fleskeholding.com

(405) 701- 3505 x221 office
(405) 417- 6761 cell
(405) 310- 1987 fax



WESTGATE PARK - OFFICE DEVELOPMENT

10433 W RENO AVE, OKLAHOMA CITY, OK 73127



Map data © 2021 Google Imagery © 2021, CNES / Airbus, Landsat / Copernicus, Maxar Technologies, U.S. Geological Survey, USDA Farm Service Agency

PAUL SWALES

Equity Commercial Realty II, LLC.
paul@fleskeholding.com

(405) 701- 3505 x218 office
(405) 420- 6244 cell
(405) 310- 1987 fax

JOSH WHITE, CCIM

Equity Commercial Realty II, LLC.
josh@fleskeholding.com

(405) 701- 3505 x221 office
(405) 417- 6761 cell
(405) 310- 1987 fax

