



**NTTdata**

10401

**WESTGATE ONE | FOR LEASE**

10401 W RENO AVENUE, OKLAHOMA CITY, OK 73127

**LEVI BALLARD**

lballard@newmarkrp.com

O: 405.208.8639 C: 405.426.5592

**BRANDON BIRDWELL**

bbirdwell@newmarkrp.com

O: 405.463.3239 C: 405.612.4639

**NEWMARK**  
ROBINSON PARK

  
**GARDNER  
TANENBAUM**





## DETAILS

Lease Rate	\$20.00 SF/yr (FSG)
Building Size	200,000 SF
Available SF	1,500-40,159 SF
Year Built	2016
Zoning	Urban Commercial
Market	Oklahoma City

## PROPERTY OVERVIEW

Westgate One is a Class A office space situated in the center of the highly sought-after mixed-use office & retail development of Westgate Park.

This 200,000 SF building is outfitted with a contemporary lobby outfitted with a unique touchscreen directory for tenants. Other features include freight elevator access, nine-foot ceiling heights, and a beautiful water feature at the front of the campus entrance.

NTTD Data is currently occupying floors three through five, leaving the first two 40,000 SF floorplates and open layout ideal for build-to-suit use.

Development plans for Westgate Park include the addition of +40,000 SF of retail and +60,000 SF of additional office space. In addition to the development of multi-family units to the east, pad sites are available for a hard corner convenience store, 2-story office building, retail center and full-service restaurants/fast food.

Tenants in Westgate One will have immediate access to these retail, eateries, and beautiful outdoor spaces, all within minutes of downtown OKC.

Multifamily development coming in Spring 2024! The development will consist of 444 apartment homes with a unit unique mix of Studio, 1 & 2 Bedroom units that will be located on approximately 20 acres within the Westgate Park Development.

## PROPERTY HIGHLIGHTS

Five total floors (floors three through five currently occupied by NTT Data)

Open floor plans allow for customizations, collaboration and space efficiency

On site fiber optic

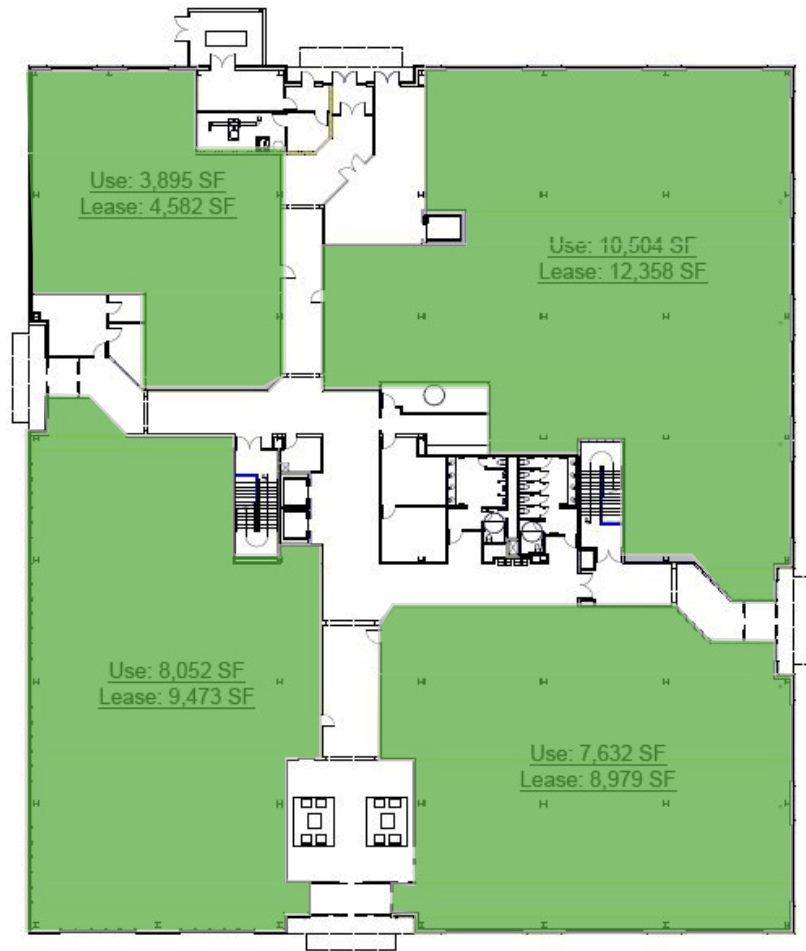
Unique touchscreen directory located in Lobby

Monument signage along West Reno

Water feature at campus entrance

Freight elevator access

## FLOOR 1



## FLOOR 2

